



# May 2022 Newsletter

## Principal's Message

I cannot believe that the last month of the school year is already here! Where has the time gone? It has been a fabulous year and June is going to be an awesome last month of school!

First off, I would like to commend the Sunnyside School Community Association for an amazing Barn Dance fundraiser. On Friday, May 27th they hosted an awesome kids night at the school. There was pizza, ice cream, games and dancing. I bet we had close to 200 people at the school and the kids had an amazing night! On Saturday, we were hosted by Sunnyside Stables for the Barn Dance. It was an incredible evening of silent auctions, live auctions, music and dancing. I was blown away by the generosity of our community. The amount of time, energy, and generosity that was invested into the evening was incredible. I am so thankful that we have such an amazing community that is willing to invest in our school. I'm not sure exactly how much they raised, but I heard it was very successful. A huge thank you to our Community Association for pulling off a fantastic event!

We have a number of events happening in the month of June. First off, we have the Kona Ice truck coming to the school on June 9th to celebrate the (almost) end of the year. Then, on June 14th we have booked Henderson Pool for the entire school from 9:30-11:30. After swimming, we are also going to have a pizza party in Henderson Park with all the students who completed their laps for running club (which is almost the entire school!). We are also hoping to have a Sports Day towards the end of June - we have tentatively booked June 21st. It is shaping up to be an awesome month!

We also had an amazing opportunity to participate in some land-based learning down in Pavan Park. On Thursday, May 26th, the grade 1/2 and 5/6 classes joined Palliser's Indigenous Success Coordinator, Kristin Krein, for a morning of hiking and learning Indigenous perspectives about the land. We were able to learn Blackfoot words for different plants and animals, as well as hear some Blackfoot stories and play some Indigenous games. It was an awesome morning of learning. We are so lucky to have Pavan Park so close to the school and I'm looking forward to being able to utilize that space even more next year!

As we get closer to the end of June, we will be working at finalizing staffing and teaching assignments for next year. We will not finalize your child's classroom placement until we return to school in August, so please be patient with us while we sort out all of the many variables. We will make sure that we contact you in August with your child's placement. Also, we are hoping to purchase basic supplies for each student again (with a small cost assigned to parents). Supply lists will go out at the end of June with report cards.

We are looking forward to finishing this year strong and preparing for next year! As a staff, we are already looking at ways we can make Sunnyside an even better place for your child(ren) next year! As always, if you have any questions or concerns, please don't hesitate to contact me.

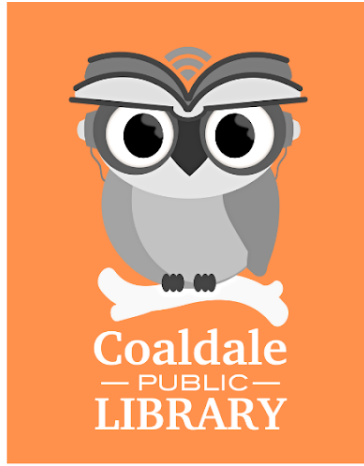
Thank you, and enjoy June!

Mitchell Van Dyk

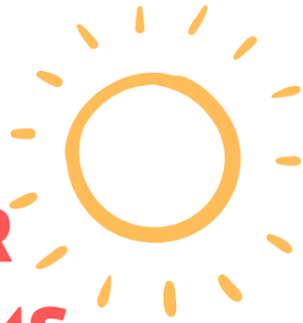


# June 2022

Sunday	Monday	Tuesday	Wednesday	Thursday	Friday	Saturday
			1 Class Photos Parent Council Meeting	2	3	4
5	6 Hot lunch hot dogs if ordered	7	8 (tentative 3 on 3 grade 5/6basketball)	9 Kona Snow Cone Truck coming	10 PD Day no school for students	11
12	13 Hot lunch Hamburgers if ordered	14 Henderson pool 9:30-11:30	15	16 Reading PAT	17	18
19	20 Hot Lunch Hamburger soup if ordered  Math PAT	21 (tentative track/sports field day)	22 Science PAT	23 Social PAT	24 All Library Materials (Books, Games, Puzzles) need to be returned	25
26	27	28 Grade 6 grad Last day of School	29	30		



# 2022 SUMMER PROGRAMS



COALDALE PUBLIC LIBRARY

Registration starts June 6

Contact Vena for more info!  
403-345-1340

[coalsrp@coaldalelibrary.ca](mailto:coalsrp@coaldalelibrary.ca)

**TD SUMMER  
READING CLUB**

Encourages reading with games,  
prizes and more!

Runs:  
Wednesdays 11am-12pm & 2pm-3pm  
July 6-August 17  
Ages: Completed K-Grade 7



**Volunteers  
needed for  
both  
programs!**



**BOOK BUDDIES**

Paired reading program with  
games, crafts and prizes!

Runs:  
Tuesdays & Thursdays @ 11am-12pm  
July 5-August 18  
Ages: Completed K-Grade 3

# Learning Commons

Please have  
all Learning  
Commons  
Materials,  
(Books,  
Puzzles,  
Games)

Returned to  
the School no  
later than  
June 24, 2022



# Sunnyside Early Learning Program

May is such a beautiful month! Watching all the trees, tulips, and grass grow. We were busy this month with our special Mothers Day Tea, learning about a butterflies life cycle, and exploring outer space.



In June we will be learning about farming, and getting ready for our graduation!

# Kindergarten News

## Kindergarten Photos





# Grade 1/2 News - Mrs. Klassen

Spring has been full of learning, play and exploration! From bird art to watching the explosion of green in the coulees....we are embracing the season each and every day!

Beautiful bird paintings:



Our monthly Pavan Park trip included Blackfoot ways of knowing with our guest Kristin Krein!



Sunnyside has its own living campus! Observing the goslings, thatching ants, and other pond life is such a great way to learn about local habitats.





# Grade 1/2 News - Mrs. Slusar

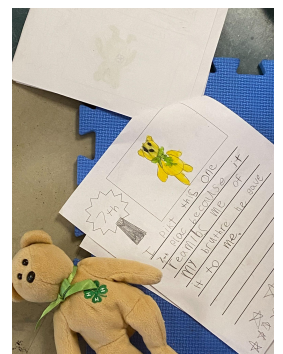
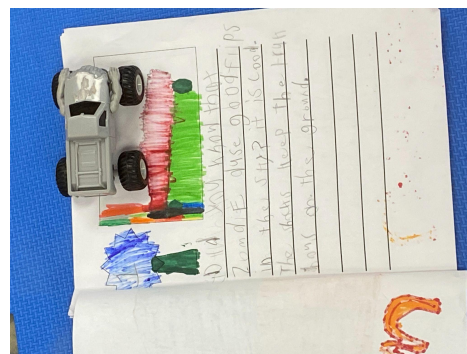
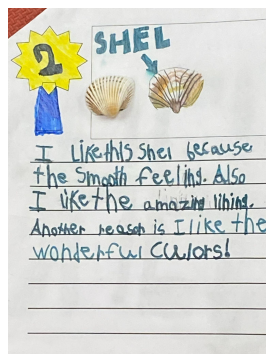


*Take me outside Day!!*



## PAVAN PARK

*Opinion Writing!*





**Writing Celebration!!**



**Flames!!**



**Sketches**



**Signs Of Spring!!**

# News from the Grade 3/4 Classroom

I can't believe how quickly these past few months have flown by. I guess the old saying is true .... Time really does fly when you're having fun! With less than a month of school left, we may have a lot to do, but I can tell you, we're going to have fun doing it!!

Here's a brief description of what we've been up to lately.

**Math** - We recently wrapped up our unit on multiplication and division. We spent a lot of time practicing these skills with the goal of developing a strong foundation to take forward into next year.

**LA - Reading:** Class read alouds, book clubs, and independent reading are just a few of the ways we incorporate reading into our day. We finished reading the fifth and final book in the "Fudge" series - "Double Fudge". Everyone **loved** this series and hated to see it end. It has been wonderful to see this group challenge themselves to read novels and even look for a "new series" to enjoy. Last week, we had a blast reading with the Kindergarten students and we plan to do it again in June! **Word Work:** We continue to work on our phonics, vocabulary, and spelling skills by taking part in a variety of activities. **Writing:** We are wrapping up our mini-Poetry unit. We had a lot of fun writing a variety of poems including acrostic, Me: Fact or Fiction, Alliteration Ice Cream and Haiku poetry. Check out our class created "Sunnyside School" acrostic poem!

**Social** - We continue to look at how people living in Peru, Tunisia, Ukraine and India depend on, adapt to and change their environment.

**Science** - Our new unit is called "Animal Life Cycles". In it we are looking at a variety of animal groups, their characteristics, habitats, how they care for their young, etc.

**Art** - These past few weeks we've been having fun making connections to Science. Everyone is challenging themselves to draw animals more realistically.

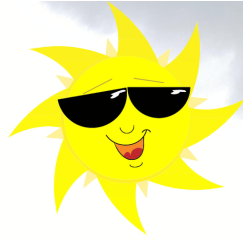
Here's hoping for wonderful weather (with less wind), for our last month of school!!

As always, feel free to contact me if you have any questions.

Mrs. J. Henderson



<b>S</b>	Stands out from other Schools because its a country School.
<b>U</b>	topia for all Sunnyside school learners in the world.
<b>N</b>	Nice Teachers that greet me in the morning.
<b>N</b>	Nice people are always here no matter what's going on.
<b>Y</b>	Yep its the best school in the world its obviously in a better location the teachers are nice.
<b>S</b>	School of our awesome things we share.
<b>I</b>	I love our school. I like everything hanging out with my friends at Sunnyside.
<b>D</b>	Daily fun activities outside and in side and you can play with your friends.
<b>E</b>	every body gets along so that makes it a happy school.
<b>S</b>	Sunnyside School is the place to be because it has awesome people in it.
<b>C</b>	cool methods activities every day.
<b>H</b>	umble teachers, staff and helpers.
<b>O</b>	Outside weather warriors and wellness at Sunnyside.
<b>O</b>	Our School is unique and stands out from other schools because of the wellness fun.
<b>L</b>	Lots of good teachers at Sunnyside school.



# June 2022

Mrs. Hudey    Grade 3 / 4

We are looking forward to a fun filled June!  
Hard to believe that our year is almost over.  
Time flies when you're having fun!!

We will be wrapping up our final units,  
collaborating with other classes and learning  
in our outdoor classrooms!

**Reading** -Our Guided Leveled Reading Groups are reading new books and practicing a variety of reading strategies. It's amazing to see their daily motivation to become better readers.

**Writing** -Review of writing strategies:  
(Paragraph, stories, opinion writing)

**Science**-Final topic: Animal Lifecycles

**Social**- We continue to compare and contrast four global communities.

**Wellness** - Students choose their wellness activities- outdoor games, sidewalk chalk, hammocks, crafts,

planting, beading, painting, basketball and hockey to name a few.

**Math**- We continue to practice multiplication and division, graphing and time.



# Grade 5/6 News – Mrs. Jesse

We made it to June!! What a successful year we've had. Students have grown physically, emotionally and intellectually and we've had a pretty good time overall!!

**Math:** We are just finishing our measurement unit and will be moving onto our final units of Motion geometry and Probability. Students will spend time translating, flipping and rotating various shapes on a coordinate plane. We will end our year with some predictions and experiments to find out the probability of various events.

**Science:** We are well into our evidence and investigation unit. Students have examined various crime scenes to enhance their observation and inference skills. They have spent time comparing various footprints, animal tracks and tire tracks too. They will examine fingerprints, learn about various fabrics and analyze each other's handwriting. We will finish this unit with a mystery they will need to solve.

**Reading:** In reading students are just finished their mystery novels and will be working on a final project to demonstrate their understanding of the various novel elements and the elements of a mystery. We will use our projects to teach each other about our novels. We are also spending time this month examining various poems to help us in our writing unit.

**Writing:** In writing, students will be celebrating their mystery stories next week. They have put a ton of time and effort into these stories and we are excited to share them. Grade 6's also wrote their writing PAT and I am so proud of them. Finally, we are also writing poetry this month.

## Important Dates:

- June 3 - Jump Rope for Heart
- June 8 - 3 on 3 basketball tournament at Sunnyside
- June 9 - Kona truck
- June 10 - PD Day
- June 14 - Swimming at Henderson
- June 16 - Reading PAT
- June 20 - Math PAT
- June 22 - Science PAT
- June 23 - Social PAT
- Grade 6 farewell/field trip dates TBA



# Palliser School Division Sunnyside School Calendar 2022-2023

August	September	October																																																																																																																									
<table border="1" style="width: 100%; border-collapse: collapse;"> <tr><th>Mo</th><th>Tu</th><th>We</th><th>Th</th><th>Fr</th></tr> <tr><td>1</td><td>2</td><td>3</td><td>4</td><td>5</td></tr> <tr><td>8</td><td>9</td><td>10</td><td>11</td><td>12</td></tr> <tr><td>15</td><td>16</td><td>17</td><td>18</td><td>19</td></tr> <tr><td>22</td><td>23</td><td>24</td><td>25</td><td>26</td></tr> <tr><td>29</td><td>30</td><td>31</td><td></td><td></td></tr> </table>	Mo	Tu	We	Th	Fr	1	2	3	4	5	8	9	10	11	12	15	16	17	18	19	22	23	24	25	26	29	30	31			<table border="1" style="width: 100%; border-collapse: collapse;"> <tr><th>Mo</th><th>Tu</th><th>We</th><th>Th</th><th>Fr</th></tr> <tr><td></td><td></td><td></td><td>1</td><td>2</td></tr> <tr><td>5</td><td>6</td><td>7</td><td>8</td><td>9</td></tr> <tr><td>12</td><td>13</td><td>14</td><td>15</td><td>16</td></tr> <tr><td>19</td><td>20</td><td>21</td><td>22</td><td>23</td></tr> <tr><td>26</td><td>27</td><td>28</td><td>29</td><td>30</td></tr> </table>	Mo	Tu	We	Th	Fr				1	2	5	6	7	8	9	12	13	14	15	16	19	20	21	22	23	26	27	28	29	30	<table border="1" style="width: 100%; border-collapse: collapse;"> <tr><th>Mo</th><th>Tu</th><th>We</th><th>Th</th><th>Fr</th></tr> <tr><td>3</td><td>4</td><td>5</td><td>6</td><td>7</td></tr> <tr><td>10</td><td>11</td><td>12</td><td>13</td><td>14</td></tr> <tr><td>17</td><td>18</td><td>19</td><td>20</td><td>21</td></tr> <tr><td>24</td><td>25</td><td>26</td><td>27</td><td>28</td></tr> <tr><td>31</td><td></td><td></td><td></td><td></td></tr> </table>	Mo	Tu	We	Th	Fr	3	4	5	6	7	10	11	12	13	14	17	18	19	20	21	24	25	26	27	28	31																																			
Mo	Tu	We	Th	Fr																																																																																																																							
1	2	3	4	5																																																																																																																							
8	9	10	11	12																																																																																																																							
15	16	17	18	19																																																																																																																							
22	23	24	25	26																																																																																																																							
29	30	31																																																																																																																									
Mo	Tu	We	Th	Fr																																																																																																																							
			1	2																																																																																																																							
5	6	7	8	9																																																																																																																							
12	13	14	15	16																																																																																																																							
19	20	21	22	23																																																																																																																							
26	27	28	29	30																																																																																																																							
Mo	Tu	We	Th	Fr																																																																																																																							
3	4	5	6	7																																																																																																																							
10	11	12	13	14																																																																																																																							
17	18	19	20	21																																																																																																																							
24	25	26	27	28																																																																																																																							
31																																																																																																																											
Optional ~ Aug 22 - New Teacher/New Admin Orientation Aug 24 Div-PD Day ~ Aug 23,25,26-Site Based PD Days Aug 29 - Teacher Directed Days Aug 30 - First Student Day	September 5 - Labour Day September 23 - Division-Wide PD Day September 30 - National Day for Truth and Reconciliation **Non Operational Day	October 10 Thanksgiving Day October 21 Site Based PD Days																																																																																																																									
November	December	January	February																																																																																																																								
<table border="1" style="width: 100%; border-collapse: collapse;"> <tr><th>Mo</th><th>Tu</th><th>We</th><th>Th</th><th>Fr</th></tr> <tr><td></td><td>1</td><td>2(D)</td><td>3(D)</td><td>4(D)</td></tr> <tr><td>7(D)</td><td>8(D)</td><td>9(D)</td><td>10(D)</td><td>11</td></tr> <tr><td>14</td><td>15</td><td>16</td><td>17</td><td>18</td></tr> <tr><td>21</td><td>22</td><td>23</td><td>24</td><td>25</td></tr> <tr><td>28</td><td>29</td><td>30</td><td></td><td></td></tr> </table>	Mo	Tu	We	Th	Fr		1	2(D)	3(D)	4(D)	7(D)	8(D)	9(D)	10(D)	11	14	15	16	17	18	21	22	23	24	25	28	29	30			<table border="1" style="width: 100%; border-collapse: collapse;"> <tr><th>Mo</th><th>Tu</th><th>We</th><th>Th</th><th>Fr</th></tr> <tr><td></td><td></td><td></td><td>1</td><td>2</td></tr> <tr><td>5</td><td>6</td><td>7</td><td>8</td><td>9</td></tr> <tr><td>12</td><td>13</td><td>14</td><td>15</td><td>16</td></tr> <tr><td>19</td><td>20</td><td>21</td><td>22</td><td>23</td></tr> <tr><td>26</td><td>27</td><td>28</td><td>29</td><td>30</td></tr> </table>	Mo	Tu	We	Th	Fr				1	2	5	6	7	8	9	12	13	14	15	16	19	20	21	22	23	26	27	28	29	30	<table border="1" style="width: 100%; border-collapse: collapse;"> <tr><th>Mo</th><th>Tu</th><th>We</th><th>Th</th><th>Fr</th></tr> <tr><td>2</td><td>3</td><td>4</td><td>5</td><td>6</td></tr> <tr><td>9</td><td>10</td><td>11</td><td>12(D)</td><td>13(D)</td></tr> <tr><td>16(D)</td><td>17</td><td>18(D)</td><td>19(D)</td><td>20(D)</td></tr> <tr><td>23(D)</td><td>24(D)</td><td>25(D)</td><td>26(D)</td><td>27(D)</td></tr> <tr><td>30</td><td>31</td><td></td><td></td><td></td></tr> </table>	Mo	Tu	We	Th	Fr	2	3	4	5	6	9	10	11	12(D)	13(D)	16(D)	17	18(D)	19(D)	20(D)	23(D)	24(D)	25(D)	26(D)	27(D)	30	31				<table border="1" style="width: 100%; border-collapse: collapse;"> <tr><th>Mo</th><th>Tu</th><th>We</th><th>Th</th><th>Fr</th></tr> <tr><td></td><td></td><td>1</td><td>2</td><td>3</td></tr> <tr><td>6</td><td>7</td><td>8</td><td>9</td><td>10</td></tr> <tr><td>13</td><td>14</td><td>15</td><td>16</td><td>17</td></tr> <tr><td>20</td><td>21</td><td>22</td><td>23</td><td>24</td></tr> <tr><td>27</td><td>28</td><td></td><td></td><td></td></tr> </table>	Mo	Tu	We	Th	Fr			1	2	3	6	7	8	9	10	13	14	15	16	17	20	21	22	23	24	27	28			
Mo	Tu	We	Th	Fr																																																																																																																							
	1	2(D)	3(D)	4(D)																																																																																																																							
7(D)	8(D)	9(D)	10(D)	11																																																																																																																							
14	15	16	17	18																																																																																																																							
21	22	23	24	25																																																																																																																							
28	29	30																																																																																																																									
Mo	Tu	We	Th	Fr																																																																																																																							
			1	2																																																																																																																							
5	6	7	8	9																																																																																																																							
12	13	14	15	16																																																																																																																							
19	20	21	22	23																																																																																																																							
26	27	28	29	30																																																																																																																							
Mo	Tu	We	Th	Fr																																																																																																																							
2	3	4	5	6																																																																																																																							
9	10	11	12(D)	13(D)																																																																																																																							
16(D)	17	18(D)	19(D)	20(D)																																																																																																																							
23(D)	24(D)	25(D)	26(D)	27(D)																																																																																																																							
30	31																																																																																																																										
Mo	Tu	We	Th	Fr																																																																																																																							
		1	2	3																																																																																																																							
6	7	8	9	10																																																																																																																							
13	14	15	16	17																																																																																																																							
20	21	22	23	24																																																																																																																							
27	28																																																																																																																										
November 11 Remembrance Day November 14 Non-Operational Day	Winter Break December 26-30th December 2- Site Based PD Day	Winter Break January 2-6th January 9 First Day Back after Break January 30 Site Based PD Day January 31 Start Second Semester	February 20 Family Day February 21, 22 No Staff/Students OIL P/T/I February 23, 24 Teachers Convention																																																																																																																								
May	March	April	June																																																																																																																								
<table border="1" style="width: 100%; border-collapse: collapse;"> <tr><th>Mo</th><th>Tu</th><th>We</th><th>Th</th><th>Fr</th></tr> <tr><td>1</td><td>2</td><td>3</td><td>4</td><td>5</td></tr> <tr><td>8</td><td>9</td><td>10</td><td>11</td><td>12</td></tr> <tr><td>15</td><td>16</td><td>17</td><td>18</td><td>19</td></tr> <tr><td>22</td><td>23</td><td>24</td><td>25</td><td>26</td></tr> <tr><td>29</td><td>30</td><td>31</td><td></td><td></td></tr> </table>	Mo	Tu	We	Th	Fr	1	2	3	4	5	8	9	10	11	12	15	16	17	18	19	22	23	24	25	26	29	30	31			<table border="1" style="width: 100%; border-collapse: collapse;"> <tr><th>Mo</th><th>Tu</th><th>We</th><th>Th</th><th>Fr</th></tr> <tr><td></td><td></td><td>1</td><td>2</td><td>3</td></tr> <tr><td>6</td><td>7</td><td>8</td><td>9</td><td>10</td></tr> <tr><td>13</td><td>14</td><td>15</td><td>16</td><td>17</td></tr> <tr><td>20</td><td>21</td><td>22</td><td>23</td><td>24</td></tr> <tr><td>27</td><td>28</td><td>29</td><td>30</td><td>31</td></tr> </table>	Mo	Tu	We	Th	Fr			1	2	3	6	7	8	9	10	13	14	15	16	17	20	21	22	23	24	27	28	29	30	31	<table border="1" style="width: 100%; border-collapse: collapse;"> <tr><th>Mo</th><th>Tu</th><th>We</th><th>Th</th><th>Fr</th></tr> <tr><td>3</td><td>4</td><td>5</td><td>6</td><td>7</td></tr> <tr><td>10</td><td>11</td><td>12</td><td>13</td><td>14</td></tr> <tr><td>17(D)</td><td>18(D)</td><td>19(D)</td><td>20(D)</td><td>21(D)</td></tr> <tr><td>24(D)</td><td>25</td><td>26</td><td>27</td><td>28</td></tr> </table>	Mo	Tu	We	Th	Fr	3	4	5	6	7	10	11	12	13	14	17(D)	18(D)	19(D)	20(D)	21(D)	24(D)	25	26	27	28	<table border="1" style="width: 100%; border-collapse: collapse;"> <tr><th>Mo</th><th>Tu</th><th>We</th><th>Th</th><th>Fr</th></tr> <tr><td></td><td></td><td></td><td>1</td><td>2</td></tr> <tr><td>5</td><td>6</td><td>7</td><td>8</td><td>9</td></tr> <tr><td>12(D)</td><td>13(D)</td><td>14(D)</td><td>15(D)</td><td>16(D)</td></tr> <tr><td>19(D)</td><td>20(D)</td><td>21</td><td>22(D)</td><td>23(D)</td></tr> <tr><td>26(D)</td><td>27(D)</td><td>28</td><td>29</td><td>30</td></tr> </table>	Mo	Tu	We	Th	Fr				1	2	5	6	7	8	9	12(D)	13(D)	14(D)	15(D)	16(D)	19(D)	20(D)	21	22(D)	23(D)	26(D)	27(D)	28	29	30					
Mo	Tu	We	Th	Fr																																																																																																																							
1	2	3	4	5																																																																																																																							
8	9	10	11	12																																																																																																																							
15	16	17	18	19																																																																																																																							
22	23	24	25	26																																																																																																																							
29	30	31																																																																																																																									
Mo	Tu	We	Th	Fr																																																																																																																							
		1	2	3																																																																																																																							
6	7	8	9	10																																																																																																																							
13	14	15	16	17																																																																																																																							
20	21	22	23	24																																																																																																																							
27	28	29	30	31																																																																																																																							
Mo	Tu	We	Th	Fr																																																																																																																							
3	4	5	6	7																																																																																																																							
10	11	12	13	14																																																																																																																							
17(D)	18(D)	19(D)	20(D)	21(D)																																																																																																																							
24(D)	25	26	27	28																																																																																																																							
Mo	Tu	We	Th	Fr																																																																																																																							
			1	2																																																																																																																							
5	6	7	8	9																																																																																																																							
12(D)	13(D)	14(D)	15(D)	16(D)																																																																																																																							
19(D)	20(D)	21	22(D)	23(D)																																																																																																																							
26(D)	27(D)	28	29	30																																																																																																																							
May 19 Site Based PD Day May 22 Victoria Day	March 17 Division-Wide PD Day	April 7 Good Friday April 10 Easter Monday April 11-14 Easter Break	June 21 National Indigenous Peoples Day June 27 Last Student Day June 28 Teacher Directed Day - Last Day for Staff																																																																																																																								

**Alberta Education Exam Schedule**  
[Diploma Exam Schedule 'Click'](#)  
[PAT Schedule 'Click'](#)



### Non-Instructional Days

<b>Division-Wide PD Days</b> August 24, 2022 - (Opening Ceremony) September 23, 2022 - (Summit Day) March 17, 2023	<b>Collective Agreement Teacher Directed Days</b> August 29, 2022 Division Wide June 28, 2023 Division Wide	<b>Site Based PD Days</b> August 23,25,26, 2022 October 21, 2022 December 2, 2022 January 30, 2023 May 19, 2023	<b>Teachers Convention</b> ATA: February 23 -24, 2023
---	---	--	---

School Year Begins: August 23, 2022	Total Instructional Days	183	XX No Staff/Students
First Day For Students: August 30, 2022	Operational Days	199	Prof. Dev. Days (Palliser Directed)
Semester 2 Begins: January 31, 2023	Semester 1 Instructional Days	91	Site Based Prof. Dev. Days
Last Day for Students: June 27, 2023	Semester 2 Instructional Days	92	Collective Agreement Teacher Directed Days
National Indigenous Peoples Day: June 21, 2023			Teachers' Convention - ATA PD

School Non Staff Non Student Days Monday, April 3, 2023 Tuesday, April 4, 2023 Wednesday, April 5, 2023 Thursday, April 6, 2023	School Based Staff PD Days - No Students Thursday, November 10, 2022 Monday, June 5, 2023
---	---